



## Highcliffe School Student Bulletin

Monday 23<sup>rd</sup> -27<sup>th</sup> May 2016: Week A

### General Notices



#### The Big Walk Sponsorship Money

This is a very important message to remind all students to bring their Big Walk sponsorship money to the Finance office as soon as possible. Payment can be made via WisePAY or by cheque. **Amount raised so far £10,140.30.**

#### Student Runners

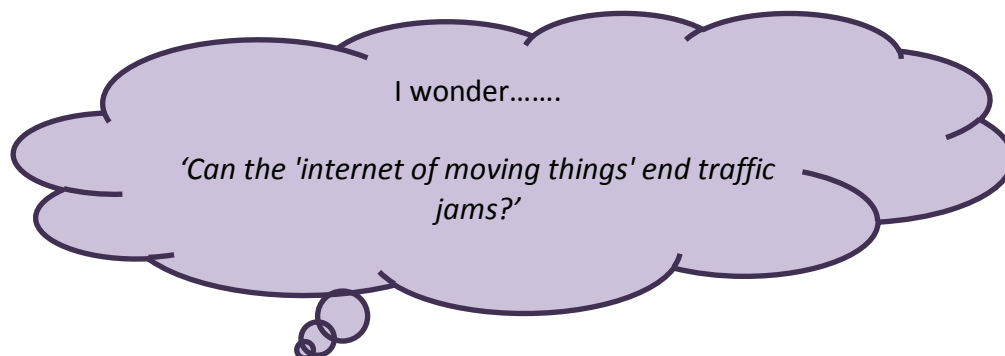
Just to remind all students and parents we no longer have student runners, therefore any forgotten homework or items will be held in Student Support for collection.

#### 'Guess the Baby' for Cancer Research UK (JWL)

Tutor group 10.3 are holding a '**Guess the Baby**' event **on Wednesday 25<sup>th</sup> May** to raise money for Cancer Research UK. See if you can guess which teachers are in the photos – and **win a cake if you get 2 correct!** Cakes will also be on sale. Come along to **En8 at lunch time** on Wednesday – open to all students and staff!

#### 48 hour Rule Reminder (KTN)

Please can parents ensure that their children are kept off for 48 hours following bouts of sickness and diarrhoea to prevent further infection. Thank you. Mrs Thompson, Medical Room.



## Exams

### Exam Packs (MHY)

Exam packs are available from the Library shop. They cost £2.50 and include a clear pencil case, 2 black pens, 1 pencil, eraser, pencil sharpener, 15 cm ruler, protractor and compass.

## Music

### Music Tour

Important notice. Please could all students going on the music tour please attend a meeting at 12:30pm on Monday 23<sup>rd</sup> May in Ex2.

### Summer Concert

The Summer Concert will be taking place on the evening of Thursday 30<sup>th</sup> June. If you would like to audition please sign up on the sheet on the board in Ex5. Auditions will be taking place at lunchtime on Thursday 9<sup>th</sup> June in Ex3. You will need to prepare a verse and chorus.

### Extra-Curricular

All new members welcome

	Before School	Lunchtime	After School
<b>Tuesday 24<sup>th</sup> May</b>		Woodwind Ensemble Ex3 Ukulele Club Ex2	Cubase Club Ex5 SATB Ex2
<b>Wednesday 25<sup>th</sup> May</b>		Grade 3 theory Ex5	Choir Ex3
<b>Thursday 26<sup>th</sup> May</b>	Grade 1 & 2 Theory Ex2		Concert Band Ex3
<b>Friday 27<sup>th</sup> May</b>		Jamming (All students) Ex2 Choir Band Studio	

If you use any equipment – please remember to leave everything tidy and report any damages that you notice

## Clubs and Revision Sessions

### **Science Booster – Wednesday 25<sup>th</sup> May**

Unit 4 Physics Booster for all Year 11. If your target grade is A\*-B, please go to Sc6. Otherwise, please go to Sc7.

### **Year 11 – Science Walking Talking Mock Unit 3**

Please be aware that on Tuesday 24<sup>th</sup> May, periods 1&2, ALL year 11's will be in the hall doing their unit 3 Science WTM.

Please remember to bring with you your standard exam equipment, calculator and highlighters.

### **Lunchtime IT Club (DKY)**

From Monday 22<sup>nd</sup> February the IT rooms will only be open for the purposes of home study or independent work both at lunchtime and after school (Monday to Thursday).

### **Year 11 History Booster Session (CMH)**

Wednesday 25<sup>th</sup> May in Hu8. 3.05-4.05pm.

## Trips

### **Year 7 Geography Fieldwork to Hengistbury Head (FST)**

We are taking the year 7's to Hengistbury Head on Wednesday 25th and Thursday 26th May.

The schedule for each day is as follows:

#### **Wednesday 25<sup>th</sup> May**

**7.1/7.2** will be leaving school at 9am and returning to school at 11.45am in time for period 3.

**7.3/7.4** will be leaving school at 11.20am and will return to school in time for normal transport at the end of the day. Students will also need a packed lunch.

#### **Thursday 26<sup>th</sup> May**

**7.5/7.6** will be leaving school at 9am and returning to school at 11.45am in time for period 3.

**7.7/7.8** will be leaving school at 11.20am and will return to school in time for normal transport at the end of the day. Students will also need a packed lunch.

**7.9** will be split between the morning and afternoon sessions

Students leaving at 9am should register with their tutor and go to the tennis court next to HU1.

Students leaving at 11.20am should be outside HU1 by 11.10am with their packed lunch and writing equipment.

# My Help Live



## Extended Learning Time in our Learning Centres

### Break and Lunchtime

Monday-Friday

LS1 11.00-11.20am  
 LS1 13.30-13.55pm  
 IT2 13.30-13.55pm

### After School

Monday-Thursday

Library 3.05-4.00pm  
 IT2 3.05-4.00pm

## PE Notices

### FIXTURES/PRACTICES 23<sup>rd</sup> -27<sup>th</sup>

	<b>LUNCHTIME (1.25-1.55pm)</b>	<b>AFTER SCHOOL (3.05-4.10pm)</b>
Monday	Year 8 Cricket Club (SHM)	Year 7 Cricket v BSB (A) (NJS)
Tuesday	Year 7 Cricket Club (NJS)	Year 8 Rounders Tournament @the Grange (MWR) leave 1pm Year 9 Rounders v Ballard (H) (HWH)
Wednesday	Year 9 Cricket Club	Athletics Club (All Years) Year 9 Rounders Tournament @ BSG (MWR) leave 12.50pm
Thursday	Year 10 Cricket Club (NJS)	Year 7 Rounders Club Year 8 Cricket (B Team) @ Twynham (JDN) Year 10 Rounders v BSG (H) (HWH)
Friday	Girls Cricket Club (CFM)	

**Literacy (DBN)**

**CONNECTIVES FOR MAKING SURE POINTS ARE EXPLAINED**

Sometimes we make a point, give an example and explain it. However, we don't always follow it through and make the point we want to make really "hit home".

Use the following connectives to help structure your thinking:

*This means that ...*

*As a result ...*

**WORD OF THE WEEK**

**disappear**

A Way to Remember:

A Way to Remember: The prefix never changes. It is always "dis".

dis+appoint    dis+may    dis+ability    dis+arm

*How many other words can you come up with that have this prefix?*

**SPELLING**

In the student planner there is a "Word Wall" on which students can write troublesome spellings. If you have corrected a spelling, students should write the word on their word wall so they can practise it. The "Word Wall" is on page 183.

**Sat 21st May 2016**



# **RYA PUSH THE BOAT OUT**

**Try sailing with**

## **Highcliffe Sailing Club**

**10am - 3pm, Sat 21st May**

**Mudford Quay, Mudford, Christchurch, Dorset BH23 4AB**

Free taster sailing session  
RS demo boats Aero and Quest  
Tour of our club  
Sailing dinghies on display  
Galley open for tea and cakes

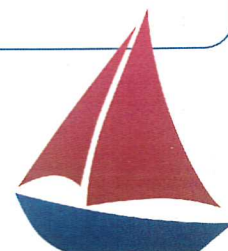
**To book a place:**

**email: [com@highcliffesailing.co.uk](mailto:com@highcliffesailing.co.uk)**

**tel: 01425 274874**

**[www.highcliffesailing.co.uk](http://www.highcliffesailing.co.uk)**

**[www.rya.org.uk/go/PTBO](http://www.rya.org.uk/go/PTBO)**



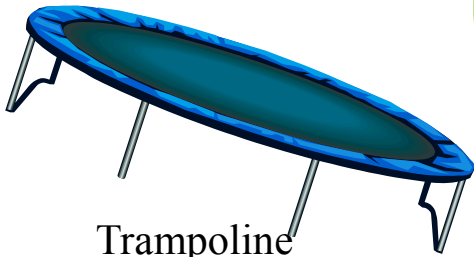


# WALKFORD YOUTH CLUB

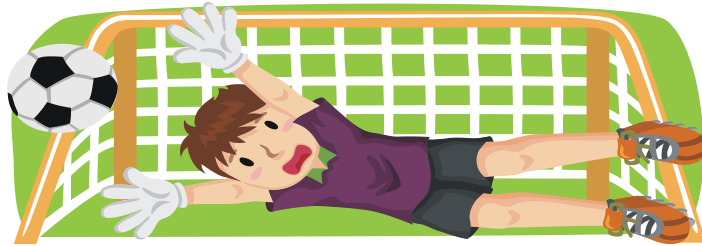
Where Children come First

The Pavilion, Wingfields Recreation Ground, Smugglers Lane North,  
Highcliffe Christchurch BH23 4NW

**WE ARE OPEN ALL YEAR INCL SCHOOL HOLIDAYS**



Trampoline



Football

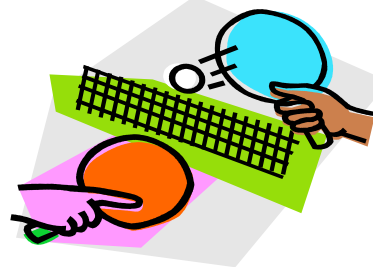
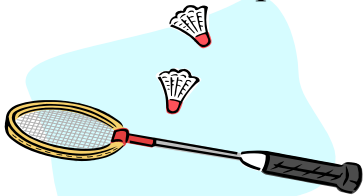


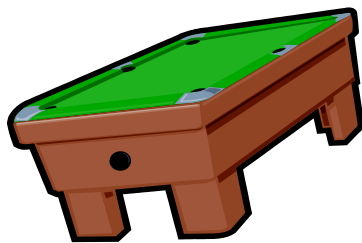
Table Tennis



Tuck Shop



Badminton



Pool



Computers



Xbox



Football Table



Guitars



Basketball



Drums

**Open**  
**Mondays**  
**6pm-8pm**  
**(8-11 years)**  
**Fridays**  
**7pm - 9pm**  
**(11-18 years)**  
**£1 admission**

**For further information,  
Contact 07767 880089**

## HIGHCLIFFE YOUTH CHOIR

Email: [hjc@highcliffejuniorchoir.org.uk](mailto:hjc@highcliffejuniorchoir.org.uk)

Tel: 01425 276544 or 01590 682223

[www.highcliffejuniorchoir.org.uk](http://www.highcliffejuniorchoir.org.uk)

There is an award-winning choir on your doorstep. Many previous members have gone on to great success, having gained confidence and other vital skills from having been in the choir over the 48 years of its life.

### Sing with us...

...if you enjoy great music, would like to perform to a high standard and want to be part of a long-established choir.

### You will need...

...to show enthusiasm, commitment and a readiness to develop your skills. NO EXPERIENCE OF SINGING IS NECESSARY.

### The rewards are...

...exceptional choral training, exciting concert opportunities, making new friends and lots of fun!

### Membership of HYC...

...is open to boys and girls aged 6-10 (training choir) and 11-18 (full choir).

Rehearsals take place at Highcliffe St Mark's Primary School every Friday evening.